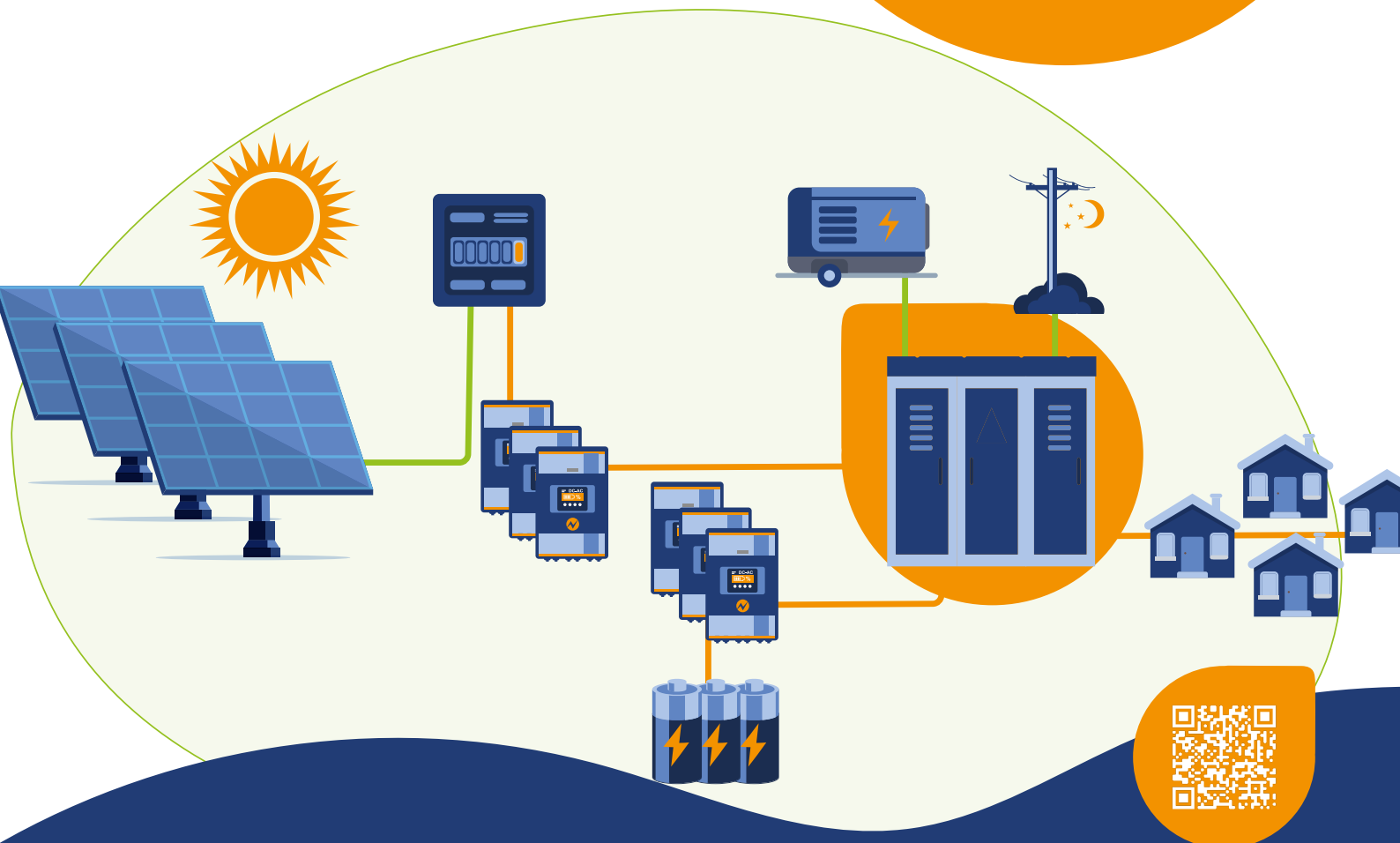
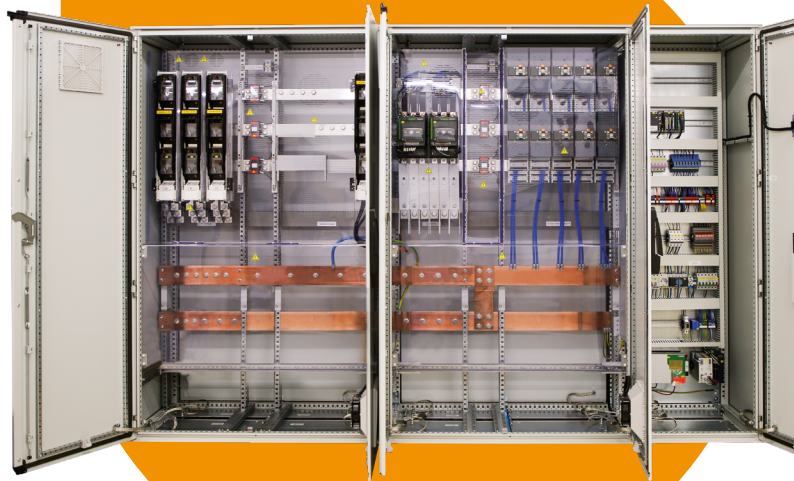


CENTRALCONNECT 500/800

Centralised control and protection for
your stand-alone system

The enwitec CentralConnect 500/800 is the comprehensive AC main distributor for AC-coupled battery inverters with off-grid capability. Developed for large, decentralised stand-alone systems, it forms the backbone of power distribution and power control and guarantees maximum availability and safety.

Enquire now and learn more!



The CentralConnect 500/800 distributes and controls the power of a stationary electrical storage system comprising several AC-coupled battery inverters. It connects consumer loads and photovoltaic inverters in an AC coupling. AC coupling. When photovoltaic generation is low, a public grid or an emergency generator can be switched on. All power supply sources and loads are protected by integrated fuses or circuit breakers. Loads can be prioritised and switched off when the battery charge level is low.

What makes CentralConnect 500/800 so special?

- **All-in-one control cabinet system:** For decentralised, large island systems.
- **Centralised power distribution and power control:** In the stand-alone grid.
- **Central communication cabinet:** For measurement and control and control components.
- **Compact design:** For high ambient temperatures.
- **Sophisticated surge protection concept:** For maximum availability.
- **High-quality components:** For maximum reliability.
- **Generously dimensioned cable connections:** For easy installation.
- **Partial contact protection covers:** Easy to maintain.
- **Powder-coated steel enclosure system:** For indoor installation.

Technical specifications for 500 kW class:

- **Variant 1:** Connection for 10 x 50 kW battery inverter, max. 690 kW emergency generator, PV connection: max. 750 kW, load max. 500 kW, dimensions: 3000 x 2200 x 600 mm, approx. 810 kg, article number 10018946.
- **Variant 2:** As variant 1, but with generator protection device, approx. 850 kg, article number 10018967.
- **Variant 3:** As variant 2, but with transfer switch for switching between generator and mains recharging, approx. 880 kg, article number 10018968.

Technical specifications for 800 kW class:

- **Variant 1:** Connection for 16 x 50 kW battery inverter, max. 800 kW emergency generator, PV connection: max. 1000 kW, load max. 800 kW, dimensions: 4000 x 2200 x 600 mm, approx. 1200 kg, article number 10019237.
- **Variant 2:** As variant 1, but with generator protection device, approx. 1240 kg, article number 10019236.
- **Variant 3:** As variant 2, but with transfer switch for switching between generator and mains recharging, approx. 1300 kg, article number 10018593.

For which systems/projects is it suitable?

The CentralConnect 500/800 is ideal for large, decentralised stand-alone systems in the commercial & industrial (C&I) and utility sectors. It is suitable for projects that require reliable and flexible power power distribution and power control.

Who is the target group?

The target group includes EPCs (Engineering, Procurement, and Construction) and system partners of battery inverter manufacturers who are looking for reliable and flexible solutions for power distribution and power control in large stand-alone systems.

